

SINGER MODEL 26

Flow Stabilizer Drawing A0273F
Installation, Operating and Maintenance Instructions

DESCRIPTION:

Model 26 is a low flow stabilizer used on Model 106/206-PR pressure reducing valve and other valves that require low flow stabilizing.

DESCRIPTION OF OPERATION:

Model 26 stabilizes the main valve by providing relatively unrestricted closing speed and controlled opening speed. Refer to Drawing A0273E.

Flow DOWN to port '1' is unrestricted. A very light spring (4) allows Inner Valve (3) to open (move down). Flow UP from port '1' is restricted by Inner Valve (3). Adjusting Screw (2) keeps the Inner Valve (3) from closing tight.

INSTALLATION:

When installing Model 26 on Model 106/206-PR, the connections are:

Port 1 - Bonnet of Main Valve.

Port 2 - Inlet of Pilot Valve.

Port 3 - Inlet of Main Valve

NOTE: There must be a RESTRICTION in the line from the inlet of the main valve to Port 3 of the Model 26. Refer to applicable schematic.

SIZING OF RESTRICTION :

- Valves 1/2" to 2": 1/16"
- Valves 2-1/2" to 4": 3/32"
- Valves 4" and larger: 1/8"
-

For connections on other models, refer to applicable schematic.

ADJUSTMENT (ON VALVE):

If the main valve pulsates (hunts), check for air in the bonnet of the main valve (see 106/206-PG instructions). If the pulsations continues after bleeding air from the main valve bonnet, adjust Model 26.

To dampen pulsations, loosen Locknut (7) and turn the Adjusting Screw (2) **COUNTERCLOCKWISE** until pulsing is dampened. Lock the locknut.

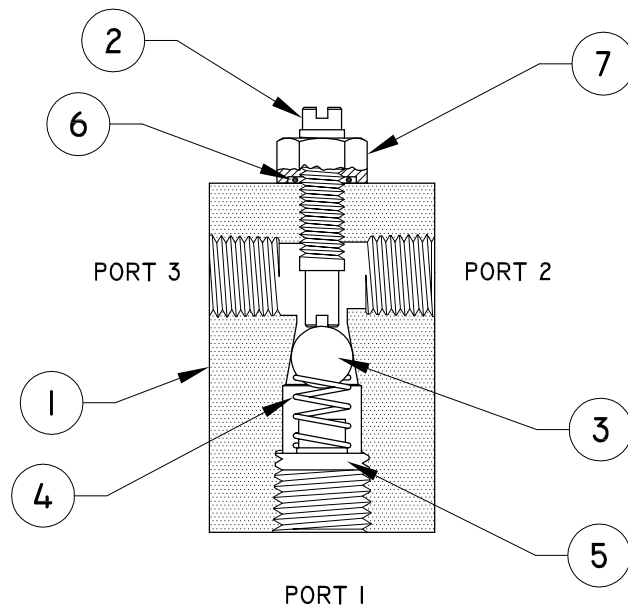
Check that the main valve has sufficient opening speed by increasing the demand rapidly. If the opening speed is too slow, turn the adjusting screw clockwise a few degrees to find an acceptable compromise between fast opening and good pulsation damping.

ADJUSTMENT (OFF VALVE):

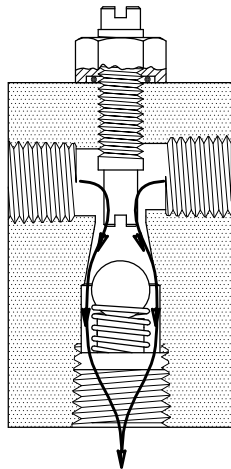
If above adjustment procedure fails to dampen the pulsations, remove Model 26 from the pilot system, remove any fittings and clean.

Blow (or connect a source of air or water pressure) to port '1'. Loosen Locknut (7) and turn Adjusting Screw (2) **COUNTERCLOCKWISE** until flow through port '1' is very severely restricted. Lock the locknut and retest. Install the pilot system. Any further adjustments required should be only a few degrees.

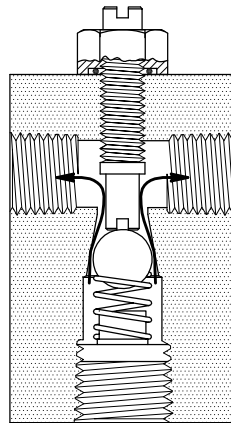
NOTE: THE SLIGHTEST TRACE OF AIR IN THE PILOT SYSTEM OR BONNET WILL CAUSE INSTABILITY IN VERY LOW FLOW APPLICATIONS. REPEATED BLEEDING AND FLUSHING MAY BE NEEDED.



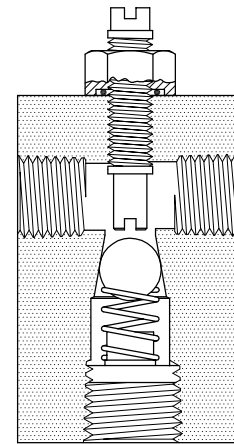
FLOW DOWN TO PORT '1'
IS UNRESTRICTED



FLOW UP FROM PORT '1'
IS RESTRICTED

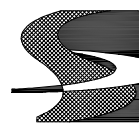


FLOW UP FROM PORT '1'
IS STOPPED



ITEM	DESCRIPTION	MATERIAL
1	BODY	SST
2	ADJUSTING SCREW	SST
3	INNER VALVE	SST
4	SPRING	SST
5	SPRING RETAINER	BRASS
6	SCREW SEAL	BUNA-N
7	LOCKNUT	BRASS

REVISED: FEB/2000



SINGER VALVE
Result-Based Solutions. Globally.™

www.singervalve.com 12850-87th Avenue, Surrey, B.C. V3W 3H9

Drawn By: Kari Oksanen	Approved By: Kari Oksanen
----------------------------------	-------------------------------------

Date: February 1, 2000	Drawing: A0273F
----------------------------------	---------------------------

Model 26

FLOW STABILIZER/SPEED CONTROL