

MODEL J0223A Miniature Pressure Reducing Pilot 1/4" PTF Port Size

DESCRIPTION:

Model J0233A is a direct acting, spring and diaphragm operated pressure reducing valve. The valve is held open by the spring. The outlet pressure acting on the diaphragm opposes the spring to close the pilot. Used with building trade valves.

FEATURES:

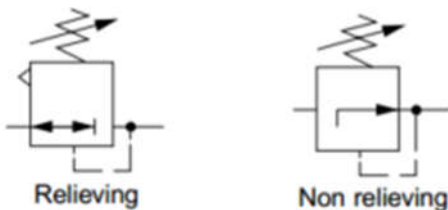
- Compact design, corrosion resistant construction.
- Brass body with brass bonnet.
- Bonnet equipped with pressure adjustable screw.
- Non-relieving models for air and water service.
- Relieving models for air service allows reduction of outlet pressure even when the system is dead ended.
- Can be disassembled without tools or removal from the water line.



ORDER INFORMATION:

| Port | Model | Flow scfm (dm³/s) | Weight lb. (kg) |
|----------|--------------|-------------------|-----------------|
| 1/4" PTF | R06-221-NNKA | 12 (5.7) | 0.2 (0.09) |

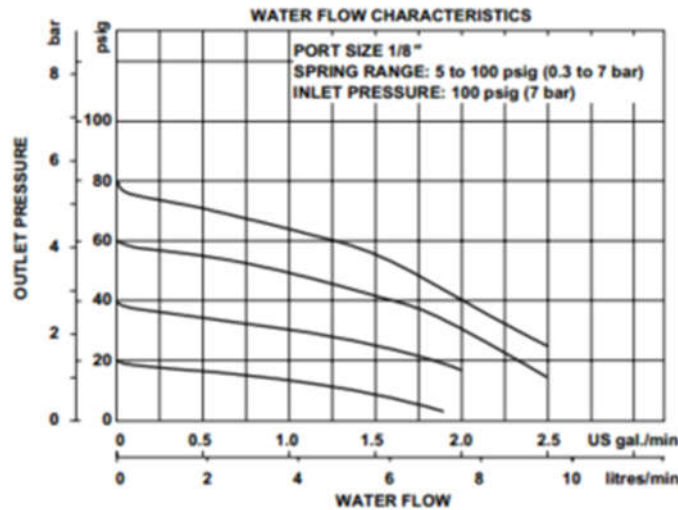
ISO SYMBLOS:



TECHNICAL DATA:

- Fluid: Water and compressed air.
- Maximum pressure: 400 psig (27 bar)
- Operating temperature: water service 35° to 150° F (2° to 35° C)
- Typical flow for water service at 100 psig (7 bar) inlet pressure, 60 psig (4 bar) set pressure and drop of 15 psig (1 bar) from set: 1.3 gpm (4.3 lpm)
- Gauge ports: 1/8" PTF
- Material:
 - Body: Brass
 - Bonnet: brass
 - Valve: Brass/Nitrile
 - Valve seat: Acetal resin
 - Elastomer: Nitrile

PERFORMANCE CHARACTERISTIC:



DIMENSIONS: (All dimension in inches (mm))

Panel mount hole diameter:

- Model with brass bonnet: 0.81" (21 mm)
- Maximum panel thickness: 0.25" (6 mm)

