

# MODEL 34

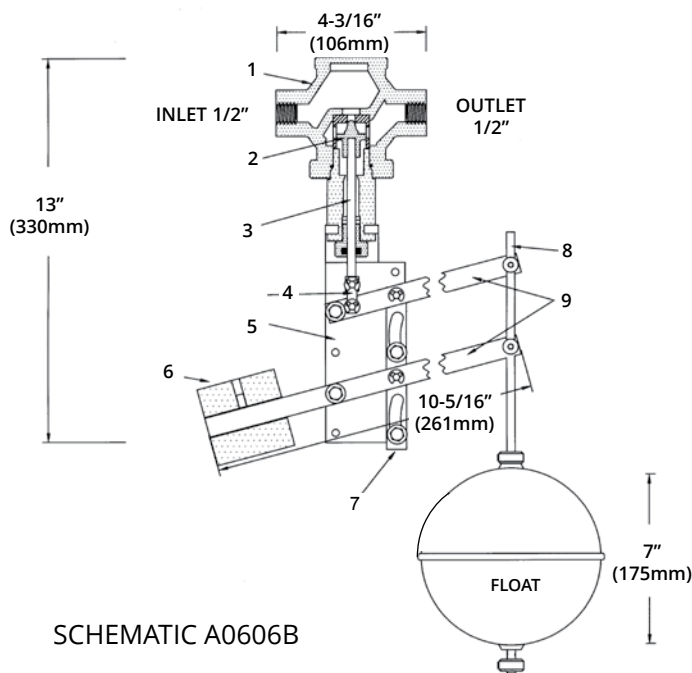
## MODULATING FLOAT PILOT WITH VERTICAL ROD

### PRODUCT OVERVIEW

The 34 modulating float pilot is comprised of a copper float and brass rod assembly which moves vertically. As the level rises, the float lifts and the valve closes. The 34 pilot is optional pilot, available for modulating applications where the float and rod are installed in a still well and / or vertical action is preferred.

### ORDERING INSTRUCTIONS

Refer to page 244 for the order form and ordering instructions.



1. Body (Bronze)
2. Inner Valve (Stainless Steel)
3. Valve Stem (Stainless Steel)
4. Connector Bar (Brass)
5. Mounting Bracket (Brass)
6. Counter Weight (Cast Iron)
7. Guide Bar (Brass)
8. Float Rod (Brass)
9. Lever Arm (Brass)

**Options:** Available with stainless steel float and rod  
**Note:** When ordered as a part and/or when shipping via air freight, the 1/4 in / 6.35 mm diameter x 4 ft / 1.2 m round brass rod is not included.