

MODEL 35 MODULATING FLOAT PILOT

PRODUCT OVERVIEW

Model 35 is a Stainless Steel modulating float pilot with a Stainless Steel float, suitable for remote installation on a tank or reservoir.

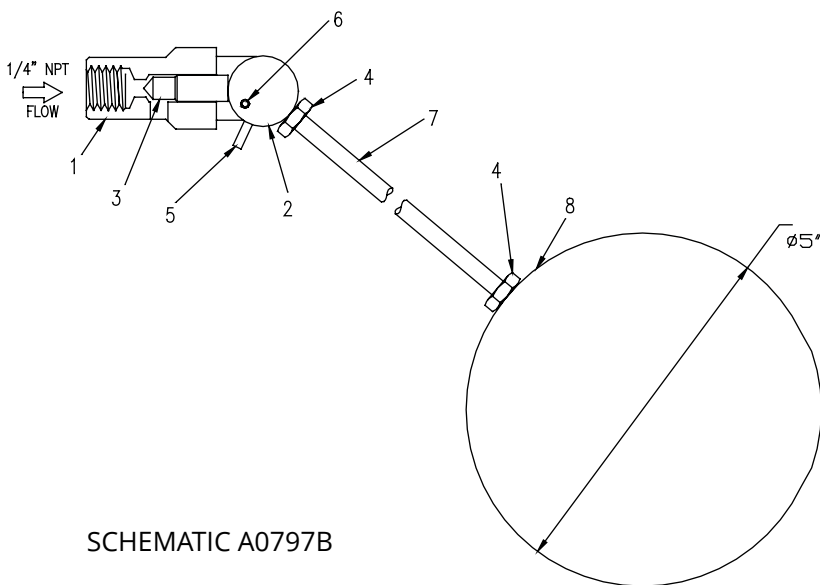
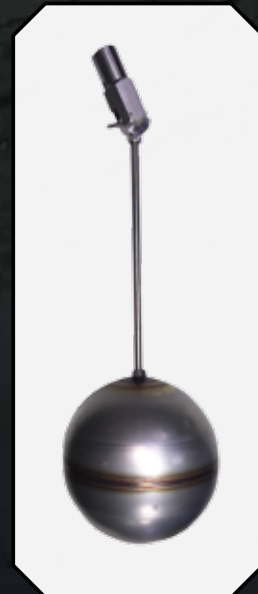
It positions the main valve in proportion to the Reservoir level. Standard configuration is for the pilot to close on rising level.

Specify reverse acting for the pilot to open on rising level. Reverse acting Inlet pressure on pilot is a minimum of 60 psi with main valve inlet pressure maximum of 10 psi. Consult Singer staff for installations outside these parameters.

The Stainless Steel float connects to the pilot using a 10 in / 250 mm Stainless Steel rod.

ORDERING INSTRUCTIONS

Refer to page 244 for the order form and ordering instructions.



SCHEMATIC A0797B

1. Body (Stainless Steel AISI 303)
2. Cam (Stainless Steel AISI 303)
3. Inner valve (Stainless Steel AISI 303)
4. Locknut (2) (Stainless Steel 18-8)
5. Stop pin (Stainless Steel AISI 302)
6. Pivot pin (Stainless Steel AISI 302)
7. Float rod (Stainless Steel AISI 303)
8. (Stainless Steel 18-8)